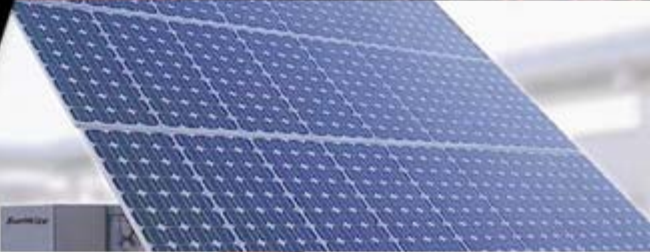


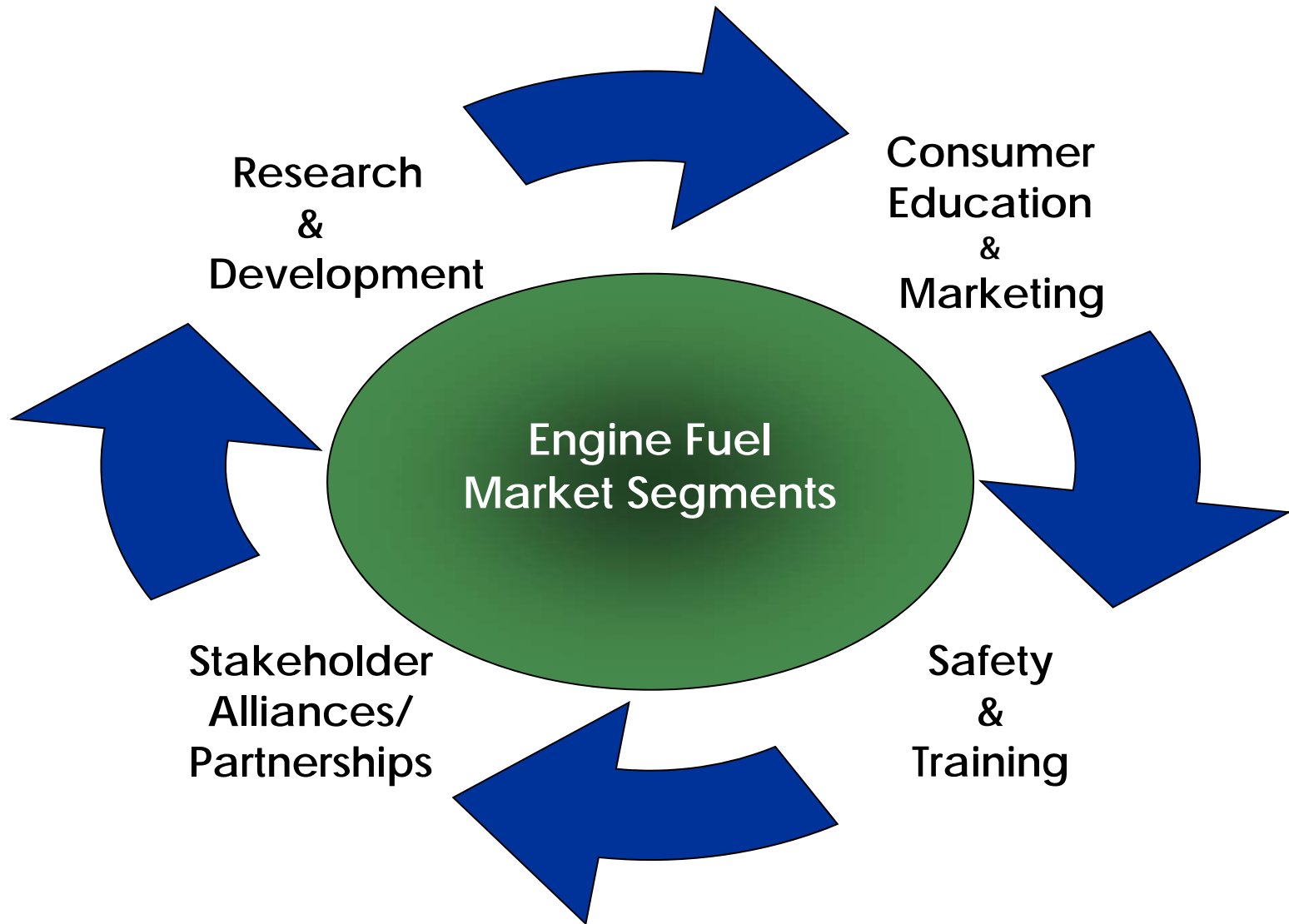
*Propane- A Cost Effective
Environmental Solution
Available Today*

August 20, 2009



PROPANE
EXCEPTIONAL ENERGY®

PERC Vision of Engine Fuel Market



Good Value



Federal Tax Incentives

Energy Bill Highlights

- Infrastructure
- Incremental vehicle costs

Highway Bill Highlights

- Volumetric Excise Tax Credit for Alternative Fuels (VEETC) (fuel use)



Federal Tax Incentives

Summary

- Infrastructure **(Now through 2010 & Inc)**
 - 50% of cost, max is \$50k
 - If non-taxable entity-seller gets credit
- Incremental Vehicle Cost – (through 2010)
 - 50% of cost, max is \$2500
 - 80% if SULEV, max is \$4000
 - Dollar amount varies depending on vehicle class
 - If non-taxable entity-seller gets credit
- Fuel Credit Rebate **(Now through 2009)**
 - \$0.50 per gallon



PROPANE
EXCEPTIONAL ENERGY®